



16/170 Labouchere Road Como, WA



2



1



1

The Townhouse You Have Been Looking For

This beautifully presented 2 story townhouse offers the perfect combination of style, comfort, and convenience.

A front, west facing courtyard provides a warm, welcoming entrance, while the rear courtyard, complete with an undercover alfresco area, is perfect for entertaining or relaxing year-round.

The spacious kitchen is a standout, offering ample bench space, plenty of storage, and a breakfast bar for casual dining. This leads to the open-plan living and dining areas which flow seamlessly, creating an inviting atmosphere.

Additional features:

* Split system air-conditioning in both bedro

Council Rates: \$641.82 p/q

Water Rates: \$262.24 p/q

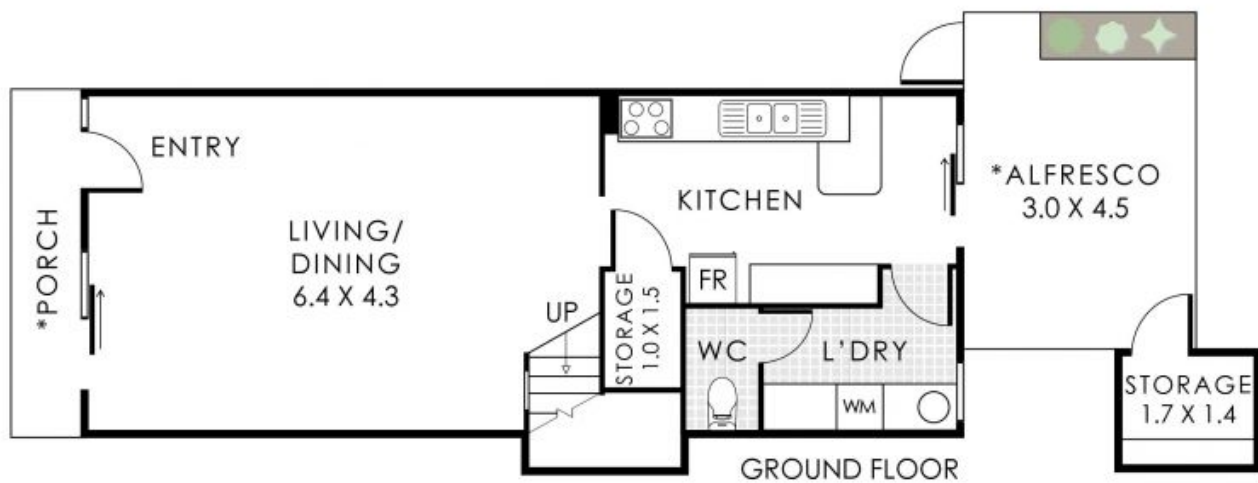
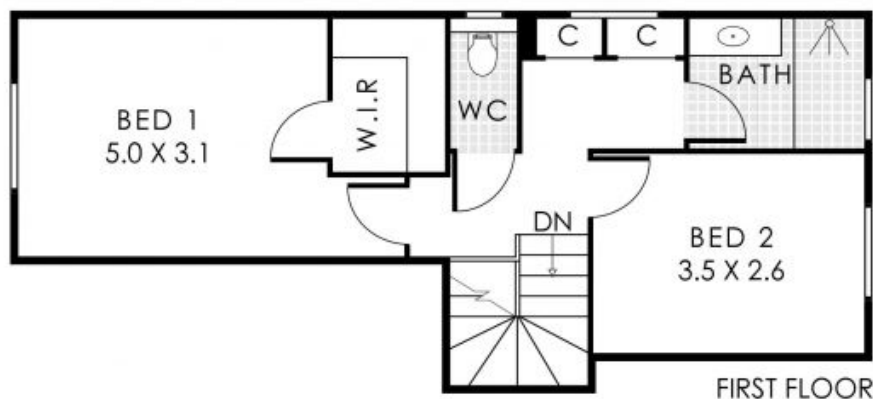
Strata Rates: \$564.24 p/q

Troy Houlahan

0411 127 920

Katie Houlahan

0401 283 932



(* FOR EXCLUSIVE USE)

16/170 Labouchere Road, Como

Residence 100m² | Storage 3m²

Total Area 103m²

16/170 Labouchere Road

Como, WA

DRIVEN
property group

Not to be used for any other purpose.
www.cbreowned.com.au

Not every effort has
other information
not include or
liable or responsible
final floor plan.